

# NEW MEMBER PACK 2021-22

# SURREY Starlets

## SEASON 24

Thank you for your interest in joining the Surrey Starlets for the 2021-22 season. This pack is here to help you decide which of our teams you would like to be considered for and understand the commitment needed for the season.

Competitive teams train at the Surrey Starlets Gym, Rosebery School, Epsom. The gym is fully equipped with a full sprung floor, along with other custom tumbling equipment such as air tracks etc.

Easily reached via public transport with direct trains to and from London – Victoria and Waterloo, the gym is a short drive from the M25, the gym has ample parking in a private car park for any one arriving by car.

#### Contents:

Team Placement Information	2
Testimonials	3 & 4
The Starlets Programme and Team Requirements	5
Training times and competition details	6
Cost Effective Cheerleading	7
Financial Requirements	8
Additional Training	9
Worlds Team	10
Summit Teams	11
Additional Info	12
What to do next	13



[www.surreystarlets.co.uk](http://www.surreystarlets.co.uk)

# TEAM PLACEMENT INFORMATION

Whilst Team Placements are scheduled after June 21st, we are still taking precautions with regards to the Covid-19 Pandemic, and each athlete will be temperature checked and given sanitiser on entry. All Covid guidelines are subject to change based on the government guidance at the time.

Each athlete wishing to be considered for the 2021-22 season with Surrey Starlets will first need to sign up online and pay their team placement fee:

[www.surreystarlets.co.uk/teamplacements2021](http://www.surreystarlets.co.uk/teamplacements2021)

Applications will not be registered and considered until the team placement fee has been paid.  
COST: £15 prior to team placements OR £20 on the day or post team placements.

Payments to be made to :

Surrey Starlets

Acc: 50402455

S/C: 60-21-05

You must include “*your name* and TP fee” as the reference.

Athletes are invited to our Team Placement evenings in groups dictated by age into the gym, following all social distancing guidelines. Athletes will participate in a ‘general class’ and we will be evaluating athletes on their flexibility, strength, fitness, jumps, tumbling and stunting.

You will be contacted and informed of whether you have been offered a space on the Surrey Starlets Programme at this stage.

Senior aged athletes eligible for Worlds may be invited back for a call back specialising in Worlds level skills.

## Dates:

### Monday 12th July—

5-6:30pm: School Years reception—4 (Tiny and Mini)

7-8:30pm: School Years 8-10 (Juniors)

### Tuesday 13th July—

5-6:30pm: School Years 5-7 (Youth)

7-8:30pm: School Years 11+ (Seniors)

### Wednesday 14th July—

7-9pm: Senior Callbacks



[www.surreystarlets.co.uk](http://www.surreystarlets.co.uk)



# TESTIMONIALS



I had done 4 seasons of University Cheer and also had a year off cheer when I joined Starlets. Any fears I had were quickly forgotten and I've been welcomed into the Starlets family with open arms.

The Starlets coaches are attentive, caring and experienced; they know exactly when to push you that little bit harder. They believe in you even when you don't believe in yourself.

Not only have I seen huge progression in my skills and flexibility in my short time with Starlets but Starlets has kept me motivated mentally and physically throughout an extremely tough year.

I couldn't be prouder to be representing Starlets in both Wisteria (L1) and Violet (L3) this season with my incredibly talented teammates and do the coaches proud!

**Bobbie, Season 1**

# TESTIMONIALS



Another bizarre year, but another year that Starlets have provided so much for my daughter. We are so grateful for the encouraging coaches, fantastic friends and cheer challenges that have kept Ashlee motivated and engaged during lockdown. Starlets really have gone that extra mile! The buzz of being back at training with her purple family has brought such positivity. I'm very excited to see the next steps on her cheer journey with this fantastic program next season!

**Tasha, Season 4**

# TESTIMONIALS



Surrey Starlets is honestly like a second home to me, everyone is so lovely and supportive of each other and there's always such an amazing atmosphere. There's a team for everyone of any ability, and I'm proud to be an athlete and coach for such an amazing programme. Thanks to all the coaches for always being so supportive and encouraging to every athlete to reach their full potential.

After 6 years and 3 World championships

I can't see myself not being part of Surrey Starlets

**Amy, Season 6**

# TESTIMONIALS



At Surrey Starlets, since my first season in 2017 I've really come out of my shell. I am a whole different person at Starlets and I feel comfortable in the environment. Surrey starlets has a huge family aspect that I love. Regardless of what team you're on people will always be cheering for you. There are so many opportunities in the programme I'm thankful for the Strive Leadership Award and travel teams. The coaches are dedicated, caring and extremely creative. I love the programme!

Elize, Season 4

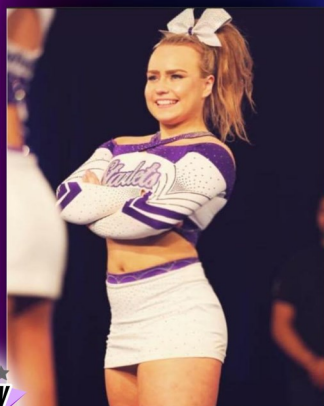
# TESTIMONIALS



This has been my daughter Rosie's first season with Surrey Starlets. Despite this season being very different due to COVID Surrey Starlets have provided amazing online training with coaches and made the games and activities fun for the youngest athletes. Rosie looks forward to her training every week and has made some lovely new friends. She has grown in confidence and is enjoying learning her routine and different skills. Rosie is looking forward to competing with Blackcurrent and many more seasons with Surrey Starlets.

Laura, Season 1

# TESTIMONIALS



Surrey Starlets is a club where everyone can be themselves and achieve their full potential. The club's friendly culture is clear as soon as you step in the gym and I am very proud of all the opportunities and amazing memories I have had with this programme. Cheerleading is a community and everyone on the Starlets programme reflects the support and trust that athletes need to perform at their best. At Starlets you are treated like an individual and I have met so many amazing Starlet stars through my time on the programme! Thank you !!

Leanne, Season 4



# ABOUT THE PROGRAMME



## WHO WE ARE

The Surrey Starlets began in 1998 as a 'pee-wee' team and ever since our first competition (where we placed 2<sup>nd</sup> out of 14!!) all of our teams have achieved a great amount of success both nationally and internationally! Over the past 23 years, our teams have represented Surrey at many prestigious events such as the World Cheerleading Championships, the London 2012 Olympics, T4 on the Beach, Reading Festival, Rugby 7's Finals, as well as many television appearances.

This year, we celebrate our 24th season, making us one of the **longest running programmes in the UK**. The past 2 seasons have been a shock for the whole cheerleading community, but our athletes and teams have been resilient, and now the upcoming season looks to be even more exciting, with many events, competitions and developments for the year.

## REQUIREMENTS FOR ALL STARLETS

- All athletes compete in teams in accordance to age rules from the USASF – when there are more than 1 team for 1 age group, athletes will compete in teams in accordance to ability.
- All athletes will compete for a full season at all competitions the teams attend.
- All athletes will compete for the season only as a Starlet with no other commitments to other teams and programmes to avoid a conflict of interest.
- All athletes will attend all training sessions and competitions throughout the year and will only miss for extenuating circumstances (found in constitution)
- No athletes will take a holiday 3 weeks before a competition. *(there will be training for all teams on the last Sunday of Feb half term for all teams )*
- All athletes will keep up to date with financial requirements
- All athletes will sign and abide by the Surrey Starlets Constitution (given after team placements) and a Surrey Starlet Medical form

Team Name	Team Age (ages inclusive)	Team Level
Blackcurrant	Tiny Team (School year reception, 1, and 2)	USASF 1
Lilac	Mini Team (School year 3 and 4)	USASF 1
Iris	Youth Team (School yr 5-7)	USASF 1
Razzminc	Youth Team (School yr 5-7)	USASF 2
Lavender	Junior Team (School yr 8-10)	USASF 1
Byzantium	Junior Team (School yr 8-10)	USASF 2
Tanzanite	Junior Team (School yr 8-10)	USASF 3
Tyrian	TRAVEL TEAM Junior Team (born 2004-2012)	IASF 2
Wisteria	Senior Team (School yr 11+)	USASF 1
Violet	Senior Team (School yr 11+)	USASF 3
Mulberry	Senior Team (School yr 11+)	USASF 4
Amethyst	International Open Team (School yr 11+)	IASF 5

# TRAINING AND COMPETITIONS

Athletes are responsible for making their way to all competitions

TEAM	TRAINING	COMPETITIONS
Blackcurrent—Tiny 1	Wednesday 5:00-6:30pm ( <i>flyers until 7:00pm</i> )	ICC Southernns – 5th Feb, ICC Easterns—19th Feb, FC Brighton-4th June
Lilac—Mini 1	Monday 5:00-7:00pm ( <i>flyers until 7:30pm</i> )	ICC Southernns – 5th Feb, ICC Easterns—19th Feb, FC Brighton-4th June <i>Battle of Champions June (bid dependant)</i>
Iris— Youth 1	Tuesday 5:00-7:00pm ( <i>flyers until 7:30pm</i> )	ICC Southernns – 5th Feb, ICC Easterns—19th Feb, FC Brighton-4th June <i>Battle of Champions June (bid dependant)</i> , FC Nationals-2nd July
Razzmic— Youth 2	Sunday 6:00-8:00pm ( <i>flyers start 5:30pm</i> )	ICC Southernns – 5th Feb, ICC Easterns—19th Feb, FC Brighton-4th June <i>Battle of Champions June (bid dependant)</i> , FC Nationals-2nd July
Lavender—Junior 1	Monday 5:00-7:00pm ( <i>flyers until 7:30pm</i> )	ICC Southernns – 5th Feb, ICC Easterns—19th Feb, ICC Nationals –26th March, FC Brighton-4th June, <i>Battle of Champions June (bid dependant)</i> , FC Nationals-2nd July
Byzantium—Junior 2	Wednesday 5:00-7:00pm ( <i>flyers until 7:30pm</i> )	ICC Southernns – 5th Feb, ICC Easterns—19th Feb, ICC Nationals –26th March, FC Brighton-4th June, <i>Battle of Champions June (bid dependant)</i> , FC Nationals-3rd July
Tanzanite—Junior 3	Tuesday 5:00-7:00pm ( <i>flyers until 7:30pm</i> ) Sunday 2:00-4:00pm	ICC Southernns – 5th Feb, ICC Easterns—19th Feb, ICC Nationals –27th March, FC Brighton-4th June, <i>Battle of Champions June (bid dependant)</i> , FC Nationals-2nd July
Tyrian—TRAVEL TEAM—Junior 2	Wednesday 7-8:30pm	See Tyrian—page 11
Wisteria—Senior 1	Tuesday—6:30-8:30pm ( <i>flyers until 9:00pm</i> )	ICC Southernns – 6th Feb, ICC Easterns—19th Feb, ICC Nationals –27th March, FC Brighton-5th June, <i>Battle of Champions June (bid dependant)</i> , FC Nationals-3rd July
Violet—Senior 3	Sunday 4:00-6:00pm Monday 7:00-9:00pm	ICC Southernns – 6th Feb, ICC Easterns—19th Feb, ICC Nationals –27th March, FC Brighton-5th June, <i>Battle of Champions June (bid dependant)</i> , FC Nationals-3rd July
Mulberry—Senior Coed 4	Sunday 4:00-6:00pm Monday 7:00-9:00pm	Please see comp list on Mulberry page— page 11
Amethyst—International All Girl 5	Sunday 6:00-8:30pm Tuesday 7:00-9:30pm	Please see comp list on Amethyst page— page 10

**ICC BATTLE OF THE CHAMPS**—BOTC is an invite only competition for teams with free entry. We will be working towards winning a bid at the 2 ICC competitions that we will be going to. If a team win a bid, we will accept the bid and that team will attend BOTC. As we won't be able to determine this until those events, each team will be informed if they will be attending once bids are awarded.



# COST EFFECTIVE CHEERLEADING

The Covid-19 Pandemic has had huge financial implications on our athletes and their families. Where possible we are trying to reduce costs to athletes to make this season more affordable.

The Surrey Starlets have always managed costs to include not only all competition and training costs, but also, travel and accommodation. This is the most affordable way to travel and stay at events, making us the most cost effective programme in the local area!

Ways in which we are keeping costs low!	
Fees	Freezing all fees, no increase in costs again this season—2 seasons in a row now!
Uniform	Keeping the whole programmes uniforms the same so no additional costs
Membership	A freeze on membership costs
Membership stash	Those who already have a Starlets jacket from the membership pack last season will have their membership cost reduced



# FINANCIAL COMMITMENTS

-Our aim is to try to keep costs to an absolute minimum, charging only what is needed. We pride ourselves on being the most affordable high level team in the local area.

- Competitive cheerleading, while not as costly as some sporting activities, can still be an expensive sport. Tuition fees (are paid in a monthly fee (this may differ for each team) and with 2 competition balances paid throughout the year to attend competitions.

TEAM	MONTHLY FEE	MEMBERSHIP COST	COMPETITION DEPOSITS <i>(these costs are approximates and will be finalised in the information pack in September based on final coemptions selected)</i>	COMP UNIFORM	COMPE-TITION BOW
<b>Blackcurrent</b>	£48pcm (11 months)	£95	£62 due in Oct and £50 due in Feb (covers 3 comps)	£105	£15
<b>Lilac</b>	£53pcm (11 months)	£95	£62 due in Oct and £50 due in Feb (covers 3 comps)	£105	£15
<b>Iris</b>	£58pcm (11 months)	£95	£90 due in Oct and £66 due in Feb (covers 4 comps)	£105	£15
<b>Razzmic</b>	£58pcm (11 months)	£95	£90 due in Oct and £66 due in Feb (covers 4 comps)	£105	£15
<b>Lavender</b>	£65pcm (11 months)	£95	£110 due in Oct and £100 due in Feb (covers 5 comps)	£105	£15
<b>Byzantium</b>	£65pcm (11 months)	£95	£110 due in Oct and £100 due in Feb (covers 5 comps)	£105	£15
<b>Tanzanite</b>	£73pcm (11 months)	£95	£110 due in Oct and £100 due in Feb (covers 5 comps)	£105	£15
<b>Wisteria</b>	£65pcm (11 months)	£105	£110 due in Oct and £100 due in Feb (covers 5 comps)	£180	£15
<b>Violet</b>	£85pcm (11 months)	£105	£110 due in Oct and £100 due in Feb (covers 5 comps)	£180	£15
<b>Mulberry</b>	£85pcm (11 months)	£105	£142 due in Oct and £100 due in Feb (covers 5 comps)	£180	£15
<b>Amethyst</b>	£80pcm (11 months)	£105	£142 due in Oct and £100 due in Feb (covers 5 comps)	£185	£15
<b>Tyrian</b>	Additional £10 per month		Additional £35 for the Milton Keynes competition—due in October		
<b>Crossovers</b>	Crossovers pay the higher team monthly fee. And an additional £10 per month		An additional £120 to be paid at the same time as the first deposit to cover additional competitions. Additional fee may be necessary if there is an additional event. Amethyst and Mulberry crossovers will incur an extra £30 for the additional event.		

## MONTHLY TRAINING FEE

-Monthly training fees cover the weekly sessions as listed on page 6 as well as tumble classes as listed on page 9.

- Training fees (for the whole year) are divided out equally per month. Monthly fees do not vary per month based on the amount of sessions. *(think gym memberships).*
- Training fees will be reduced for siblings by £15 per month which is taken off of the monthly fee = First sibling-full price, Second sibling £15 off, third sibling full price, fourth sibling £15 off etc... on classes **both siblings** participate in.
- Additional stunt training and workshops may be organised once or twice a year – all cheerleaders are expected to attend and pay the cost incurred
  - Fees are due monthly and there is a £10 late fee (per month) when this is not kept to.
- Fees are due monthly on the 1st of the month. Fees paid after the 1st (or above noted date for comps) will incur a £10 late fee.

## MEMBERSHIP PACK

The membership pack covers the costs of things such as insurance, equipment hire, music expenses, etc.

This membership includes an annual team t-shirt, a team jacket, and a team surprise. The team jacket will remain the same for next season, so athletes that cheer with us for the 2020-21 season who already have this will have their membership price for that season reduced by £15



# ADDITIONAL CLASSES

## TUMBLE CLASSES

Tumble classes run every Thursday and are included in your monthly fee! On notification of Team Placements, you will be allocated a tumble class which you can attend weekly! Athletes will be assessed on the last session of each half term to achieve their Tumble Level Badges



### BRONZE

Thursdays— 5:00-6:00pm

Main focus—walkovers and handsprings

### SILVER

Thursdays— 6:00-7:00pm

Main focus—handsprings and somersaults

### GOLD

Thursdays— 7:00-8:00pm

Main focus—somersaults and straights

### PLATINUM

Thursdays— 7:45-9:00pm

Main focus—twisting and elite passes

## PRIVATE CLASSES

£25 per session

We will be offering private coaching sessions for athletes who wish to sign up to them. These will be offered on a first come first served basis. Private sessions will be a maximum of 3 athletes working with a coach, specifically focused on progressions in tumbling and jumps, or flyer skills. Classes are 45mins for a 121, or 1hour for 2 or 3 athletes.



## RECREATIONAL CLASSES

What if I don't want to compete / cannot commit to the competition teams?

If you do not feel like you want the challenge of competing or cannot dedicate to the time or financial commitments of the competition teams, you can still continue to cheer with the Surrey Starlets!

Recreational classes run on Sundays 2:30-4pm:

Training costs £8 per week (paid half termly) and has a £45 membership fee which includes a free t-shirt.

[www.surreystarlets.co.uk](http://www.surreystarlets.co.uk)



# WORLDS TEAM 2022



## AMETHYST IAG5

For the 8th time, Amethyst will be attending the USASF World Cheerleading Championships in Disney World Florida.

The trip will as always consist of exciting events, team building activities, showoffs and of course the competition.

The travel package covers every element of the trip, including flights, accommodation, transport, entry, training stash etc and costs approx. £1650. Payments are taken in instalments throughout the year. This estimation is based on the last trip (2019) but we anticipate this may increase due to Covid.

Due to the high level of this team, athletes aiming to compete with Amethyst will be expected to have the highest level of commitment and ability.

### Competitions:

ICC Southernns – 6<sup>th</sup> Feb

ICC Easterns – 19th Feb

ICC Nationals—26&27th March

FC Adventure—MK—3rd April

**WORLDS—16th April—26th April**

*BCA Nationals 13/15th May (dependent)*

FC Brighton-5th June

*ICC Battle of Champions - June (bid dependant)*

FC Nationals-3rd July

### **BID WINNERS**

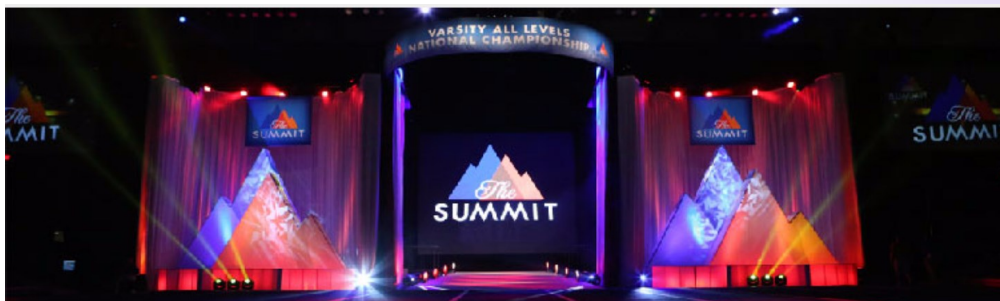
**2006, 2012, 2013, 2014, 2015, 2016, 2017, 2018, 2019**



[www.surreystarlets.co.uk](http://www.surreystarlets.co.uk)



# SUMMIT TEAMS 2022



Following on from the successes of our Junior Travel Team Tyrian, and our Senior Coed Team Mulberry, we have earned 2 Summit bids for the 2022 season.

The travel package covers every element of the trip, including flights, accommodation, transport, entry, training stash, and tickets to spectate the World Championships, and costs approx. £1650. This estimation is based on the last trip (2019) but we anticipate this may increase due to Covid. Payments are taken in instalments throughout the year.

## MULBERRY IOC4

The Summit is an additional competition to the general competitions that Mulberry compete at:

ICC Southern – 6<sup>th</sup> Feb

ICC Easterns – 19th Feb

ICC Nationals – 27th March

FC Adventure – MK – 3rd April

**SUMMIT – 21st April – 2nd May TBA**

FC Brighton – 5th June

ICC Battle of Champions – June (bid dependant)

FC Nationals – 3rd July

## TYRIAN IJ2

This team will be an additional extra to athletes first team, and will be selected based upon previous years' experience as well as tryout ability at the separate tryouts.

Tyrian will perform at the 'Purple Premiere' our UK Showcase in January and then compete at the Summit in April

COMPS:

FC Adventure – MK – 2nd April

**SUMMIT – 21st April – 2nd May TBA**

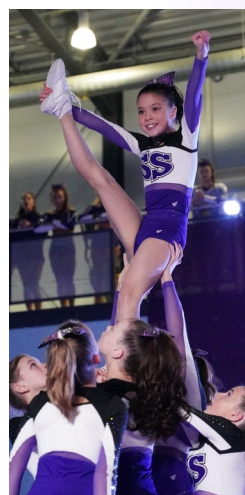




# ADDITIONAL INFORMATION

## PURPLE PREMIERE

Hosted at Rosebery School, our 15th annual showcase—the PURPLE PREMIERE—will be held on the 30th Jan 2022. We invite all parents, friends and family to watch the premiere of all of our competition and recreational routines ahead of their first competition.



## UNIFORMS

Every athlete is provided with an annual training Tshirt and team jacket as part of their membership pack.

Additional training uniform can be purchased via the training uniform order form which will be available in the post tryout information pack.

Every athlete will need to purchase a competition uniform, a competition bow (£16) and competition trainers (NFINITY recommended).

All athletes will remain in the same competitive uniform as last season, with the same bow.

(Occasionally we have second hand uniforms for sale at a reduced cost via our swap and sell group)



## TEAM MUMS

The Team Mum's have been an excellent source of support for new and returning parents on the programme. Helping with the organisation of each team, Team Mums are the first point of contact for athletes and parents.

We will again be looking for Team Mums for the different teams.

If you are interested, please see further details in the post tryout information pack.



[www.surreystarlets.co.uk](http://www.surreystarlets.co.uk)



# WHAT TO DO NEXT

Each athlete wishing to be considered for the 2021-22 season with Surrey Starlets will first need to sign up online and pay their team placement fee:

[www.surreystarlets.co.uk/teamplacements2021](http://www.surreystarlets.co.uk/teamplacements2021)

Applications will not be registered and considered until the team placement fee has been paid.

COST: £15 prior to team placements. £20 on the day or post team placements.

Payments to be made to :

Surrey Starlets

Acc: 50402455

S/C: 60-21-05

You must include “*your name* and TP fee” as the reference.



[www.surreystarlets.co.uk](http://www.surreystarlets.co.uk)